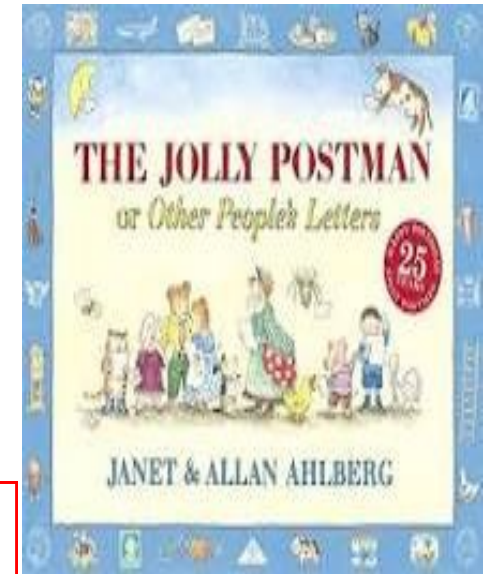




We will be learning about what happens when we want to send a letter to someone! What do we need on the envelope and where do we take it? We will be looking at stamps from different countries; how our post travels and is delivered; how letters were delivered in the old days!



Red Class role play area will be made into a Post Office! The children will learn about 'money' and how to recognise the following coins—1p; 2p; 5p; 10p; 20p. They will act out the role of a Post Office worker and also that of a customer! They will be weighing letters and parcels; adding up coin values and learning about the difference between 1st and 2nd class stamps. Could you take your child on a visit to your local Post Office

The journey of a letter.

In this topic we will be learning about the journey of a letter, through the story of The Jolly Postman.

Key vocabulary:

Post Box; Post Office; Post Van; Sorting Office; First Class; Second Class; Deliver; Express; weigh; balance; heavier than; lighter than; parcel; stamp; envelope; address



What do you go to a Post Office for?

Write a card or a letter to a member of your family or a friend! What do you need to remember to put on the envelope before you post it?!

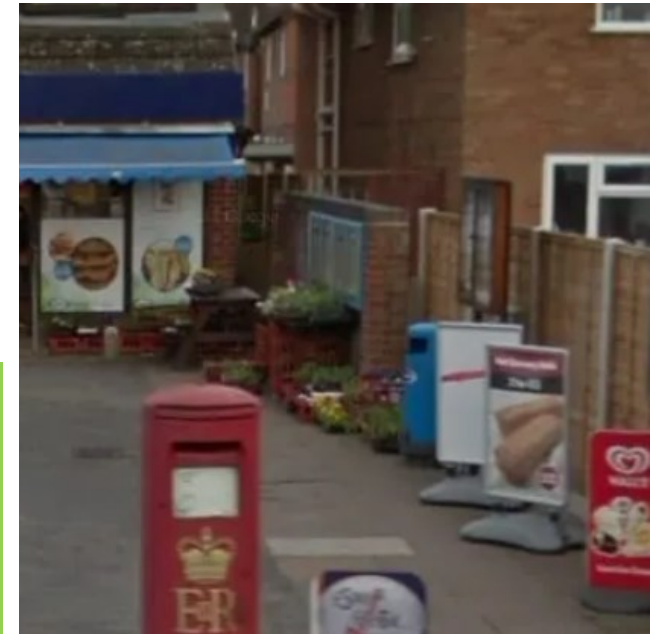


How are your letters delivered?
Do you have a

We will be learning about Chinese New Year. Can you find out how many animals are in the Chinese Zodiac 2022 is the Year of the?

Challenge!!!!

Draw a simple map of how you get from your house to the nearest post box!



We will be learning about the traditional tales within the Jolly Postman story (including Hansel and Gretel)

Our authors for this half term are Janet and Allan Ahlberg..

They are the authors of 'The Jolly Postman'

Can you find out the titles of some of the other books they have written? You might have some of their books at home, or you might be able to look at some in the library!

Hansel and Gretel



Places to visit!

The Hive library in Worcester.

Fernhill Heath Post Office.

